

# HYLUXE

MAE RIM

A Private Escape



# A PRIVATE ESCAPE

Experience the serenity of relaxation in a private space that's more than a home — it's a place to discover the meaning of life. Woven through simplicity, blended with the tranquility of nature, for a life of freedom you define.



## IMMERSE YOURSELF IN AN EXTRAORDINARY SANCTUARY



### EXCLUSIVE PRIVATE RETREAT

Experience the utmost privacy with only 6 exclusive villas, surrounded by a peaceful atmosphere for true relaxation.



### PRIME LOCATION & CONNECTIVITY

A prime location in Mae Rim District, conveniently connected by the newly developed Ring Road 4, offering easy access to all destinations.



### 360° PANORAMIC ROOFTOP

Enjoy breathtaking 360-degree views from the rooftop, fully immersing yourself in the natural landscape and surrounding mountains.



### NATURE-INFUSED INVESTMENT

Get closer to nature with a Vacation Home experience that is not only a perfect getaway but also a sustainable asset.



# SERENITY ESCAPE | INSPIRED LIVING SPACES



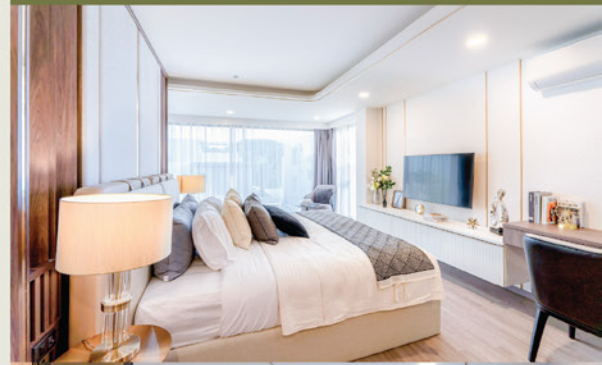
1<sup>st</sup> Floor Plan



2<sup>nd</sup> Floor Plan



3<sup>rd</sup> Floor Plan



## NEARBY LANDMARK

Mae Rim Plaza	3 Min.
Dararassamee Hospital	3 Min.
Tiger Kingdom	5 Min.
Kad Fa Rang Mae Rim	6 Min.
Summit Green Valley Chiang Mai	7 Min.
Makro Mae rim	8 Min.
Mae Sa WaterFall	10 Min.
Prem International School	15 Min.
Queen Sirikit Botanic Garden	20 Min.



## FEELS AUTHENTIC LIVING.



FOR MORE INFORMATION  
PLEASE CONTACT  
**(+66) 65 915 3462**  
HYLIFE.CO.TH

VISIT US AT  
**SALES  
GALLERY**



DEVELOPED BY

**HYLIFE**  
DEVELOPMENTS

Hyluxe Mae Rim Project: Owned and operated by Luxury Developments Co., Ltd., located at 169/31 Star Avenue 5, Moo 4, San Phak Wan Sub-district, Hang Dong District, Chiang Mai, 50230. Company's registered no. 050556009487, Registered and paid-up capital THB 1 million. The Managing Directors are Mrs. Watcharaphon Lin and Mr. Danush Ramasundram Nair. The project, Hyluxe Mae Rim, is located at Moo 1, Rim Tai Sub-district, Mae Rim District, Chiang Mai, 50180. The total project area is 4 rai 96.5 sq.w., featuring 2-story reinforced concrete residential houses with a rooftop.

Construction Permit (Aor.1) details: Villa 1: 51/2565, Villa 2: 9/2564, Villa 3: 10/2564, Villa 4: 56/2565 (permit not renewed as it will be a new development project in the future) HYLUXE 2 Villa 5: 54/2565 (permit not renewed as it will be a new development project in the future) HYLUXE 2 Villa 6: 57/2565 (permit not renewed as it will be a new development project in the future) HYLUXE 2 Villa 7, 8: 12/2564 HYLUXE 1 Villa 9, 10, 11: 59/2565 (permit not renewed as it will be a new development project in the future) HYLUXE 2 Villa 12 Clubhouse: 13/2564 (permit not renewed as it will be a new development project in the future)

HYLUXE 1 consists of 5 units (construction completed), HYLUXE 2 consists of 6 units (3 Type A, 3 Type B), which are future development projects. Common areas include a garden, security guardhouse, main entrance, and underground electrical system.